

City of Lincoln Council 30 Year Business Plan Consultation – Results Summary

The maximum number of respondents per question was 311.

It is important to note that for those questions where respondents were asked to rate an area based on a score of 1-10 with 1 being very dissatisfied and 10 being very satisfied. These have been shown as percentages for all numbers 1-10 with an average score provided within the supporting commentary.

Additionally, for those comments based questions, in some cases the comments provided cover more than one topic. In these instances, each comment has been placed under the topic with the greatest weighting.

Please rate what it is like to live on your estate/neighbourhood (Score 1 – 10)

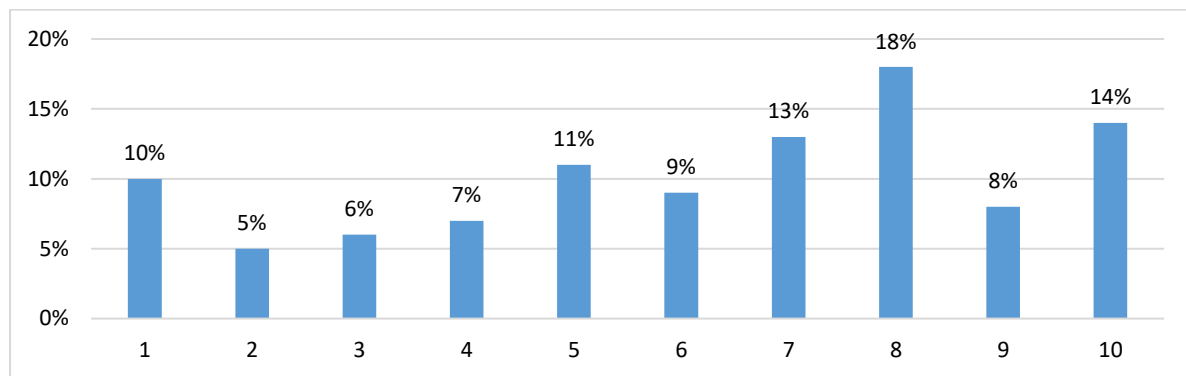


Figure 1

Figure 1 shows how respondents rated (Score 1-10) what it is like to live on their estate/neighbourhood. Those respondents who rated '5' or above amounted to 73% (226 respondents). The average score rating for this question was 6.20.

Please tell us the main reasons for this score.

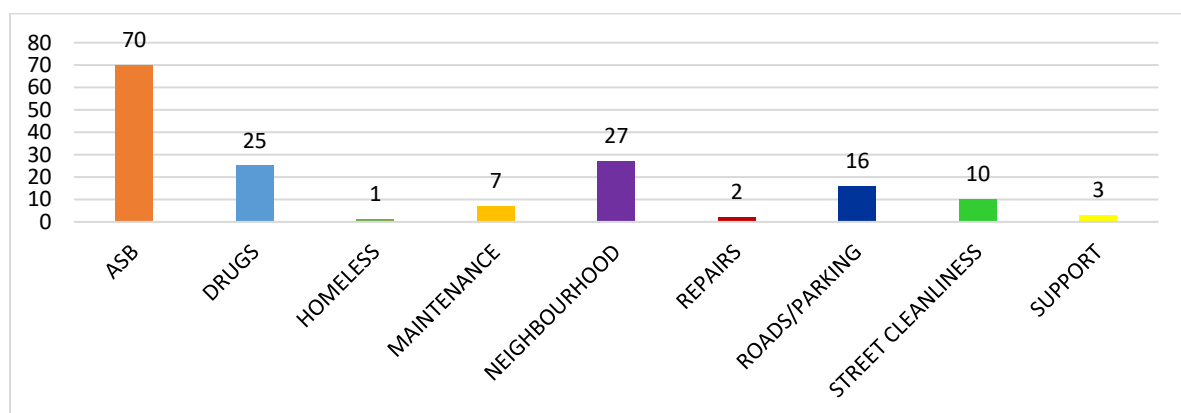


Figure 2

Figure 2 shows the main reasons why respondents rated their score for what it is like to live in their estate/neighbourhood. This was a comments-based question. Figure 2 is an

overview of the negative comments by category. Of the 265 responses to this question, there were 104 positive comments and 161 negative comments. The most common reason given was 'ASB' (Anti-social behaviour) with 70 comments (26.4%).

**How would you rate the paths/green space/play space on your estate/neighbourhood?
(Score 1 – 10)**

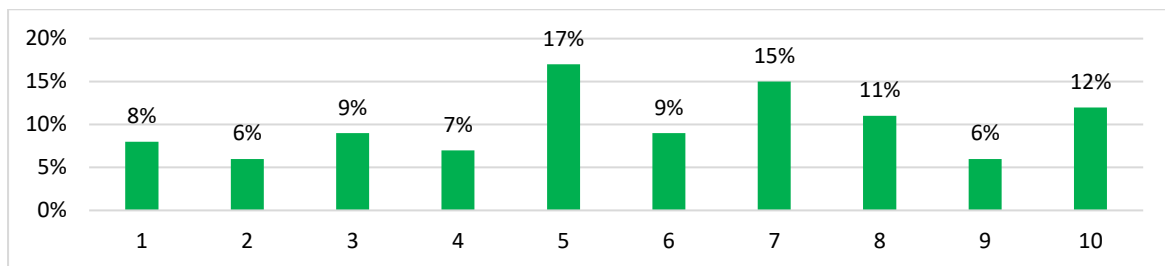


Figure 3

Figure 3 shows how respondents rated (Score 1-10) what the paths/green space/play space is like in their estate/neighbourhood. Respondents who rated '5' or above totalled 70% (213 respondents). The average score rating for this area was 5.75.

Are there any problems/issues with this these spaces?

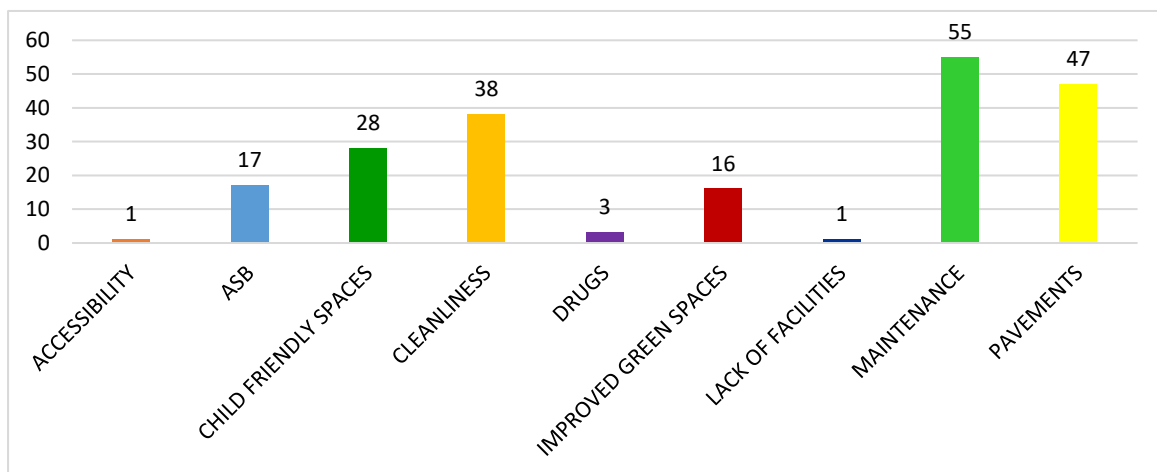


Figure 4

Figure 4 shows whether or not respondents thought there were any problems with paths/green space/play space on their estate/neighbourhood. This was a comments-based question. Figure 4 is an overview of the negative comments by category. Of the 246 responses to this question, there were 40 positive comments and 206 negative comments. The most common topic was 'Maintenance' with 55 comments (22.4%).

How would you rate the parking arrangements/spaces on your estate/neighbourhoods? (score 1 – 10)

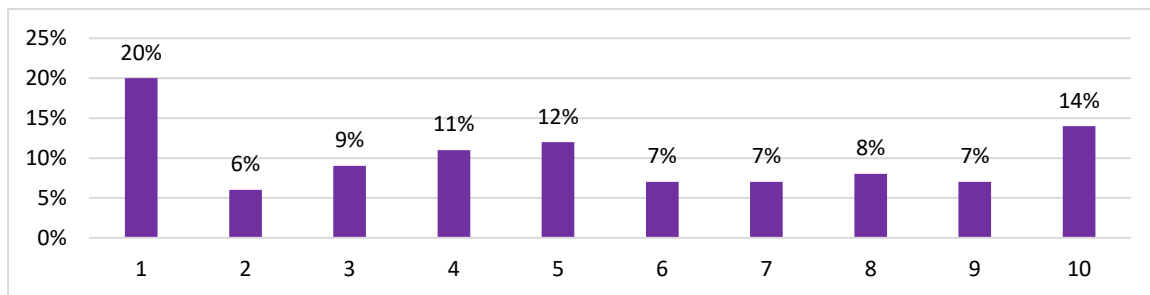


Figure 5

Figure 5 shows how respondents rated (Score 1-10) the parking arrangements/spaces on their estate/neighbourhood. The proportion of respondents who rated '5' or above was 55% (162 respondents). The average score rating for this area was 5.19.

Are there any problems/issues with this these arrangements/spaces?

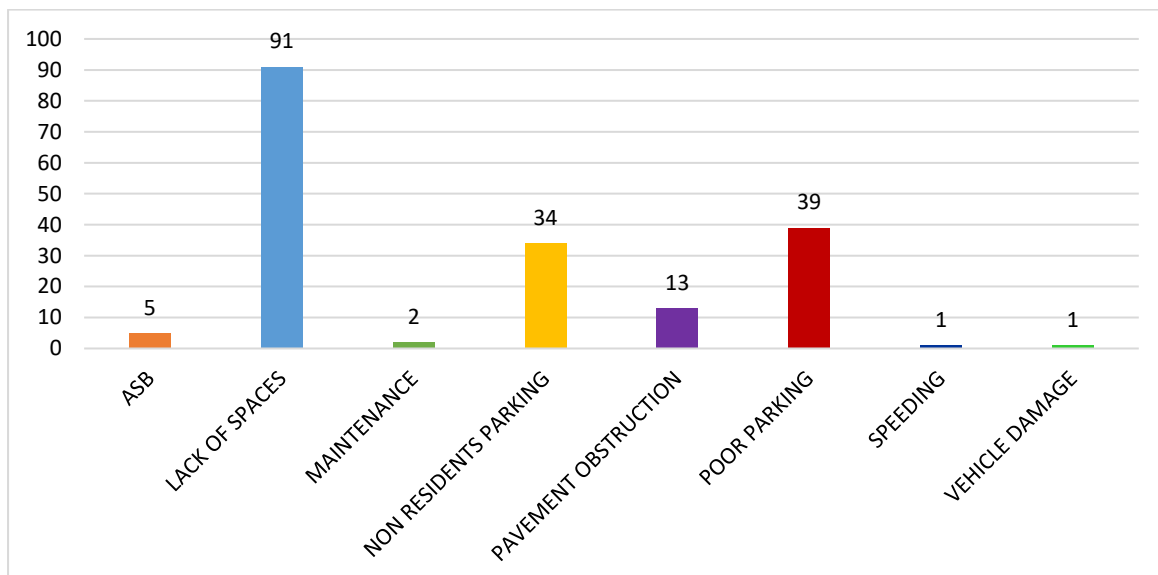


Figure 6

Figure 6 shows whether or not respondents thought there were any problems with parking arrangements/spaces on their estate/neighbourhood. This was a comments-based question. Figure 6 is an overview of the negative comments, categorised based on respondents' feedback. Of the 228 responses to this question, there were 42 positive comments and 186 negative comments. The most common topic was 'Lack of spaces' with 91 comments (39.9%).

How safe do you feel on your estate/neighbourhood? (score 1 – 10)

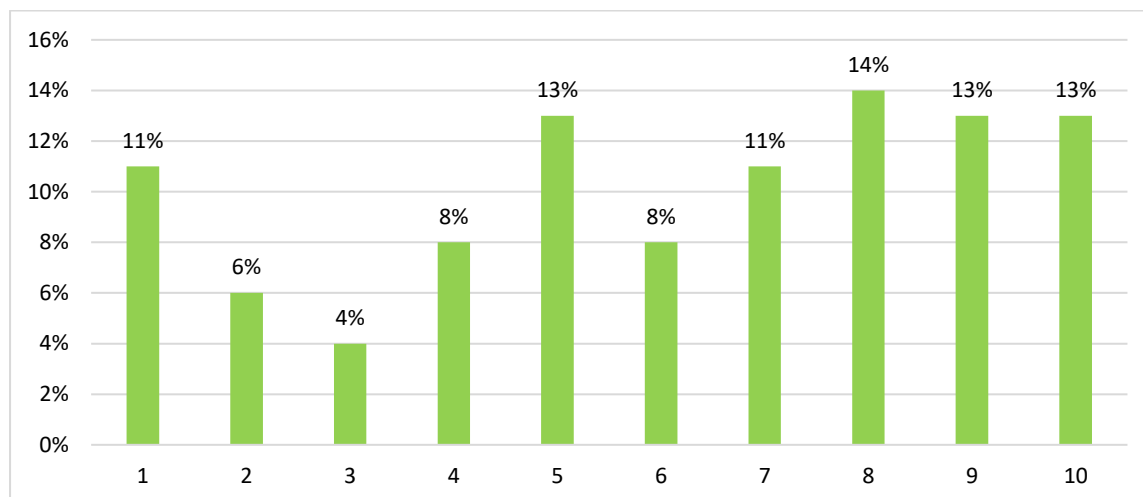


Figure 7

Figure 7 shows how respondents rated (Score 1-10) how safe they feel on their estate/neighbourhood. Those respondents who rated '5' or above was 72% (218 respondents). The average score rating for this area was 6.10.

Please tell us the main reasons for this score.

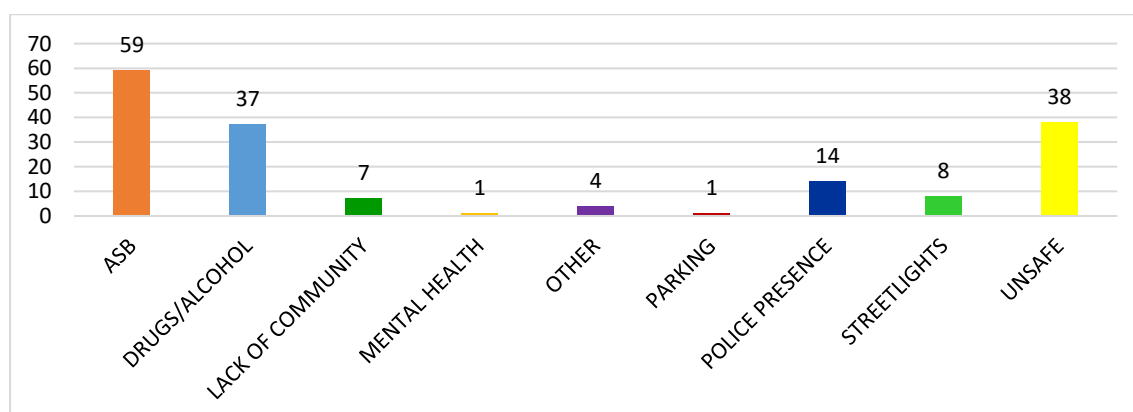


Figure 8

Figure 8 shows the main reasons why respondents rated their score for how safe they feel in their estate/neighbourhood. This was a comments-based question. Figure 8 is an overview of the negative comments by category. Of the 233 responses to this question, there were 64 positive comments and 169 negative comments. The most common topic was 'ASB' (Anti-social behaviour) with 59 comments (25.3%).

The following two questions on communal areas related to those respondents who live in a flat or maisonette only.

Please rate the indoor communal area(s) you use (score 1 – 10)

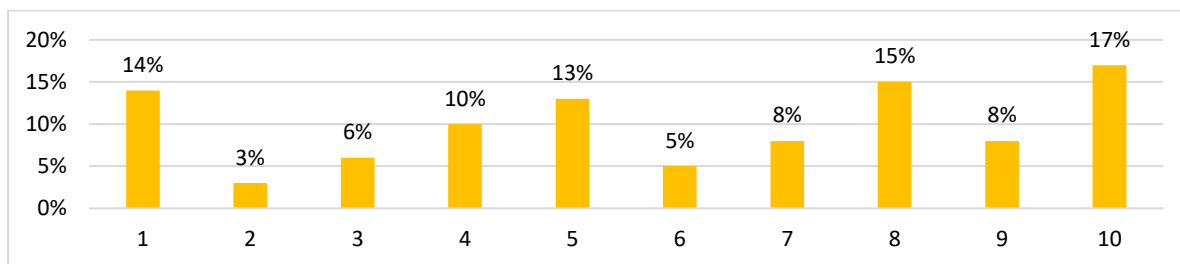


Figure 9

Figure 9 shows how respondents rated (Score 1-10) the indoor communal areas that they use. The proportion of respondents who rated '5' or above was 66% (115 respondents). The average score rating for this area was 5.97.

Please rate the outdoor communal area(s) you use (score 1 to 10)

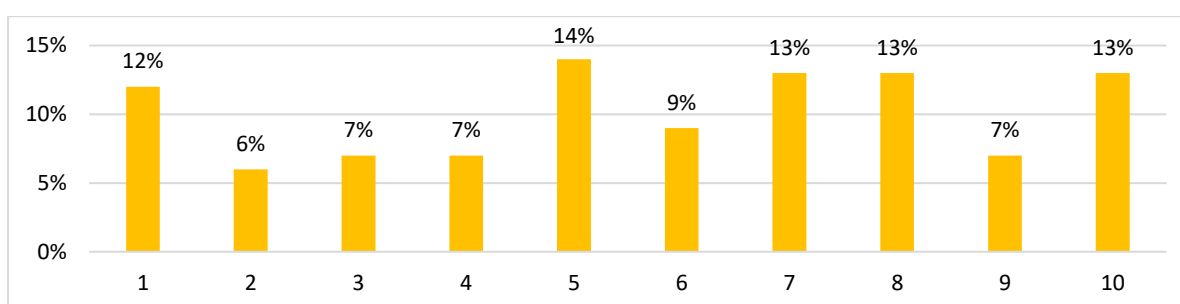


Figure 10

Figure 10 shows how respondents rated (Score 1-10) the outdoor communal areas that they use. The proportion of respondents who rated '5' or above was 69% (125 respondents). The average score rating for this area was 5.77.

Are there any problems/issues with these communal spaces?

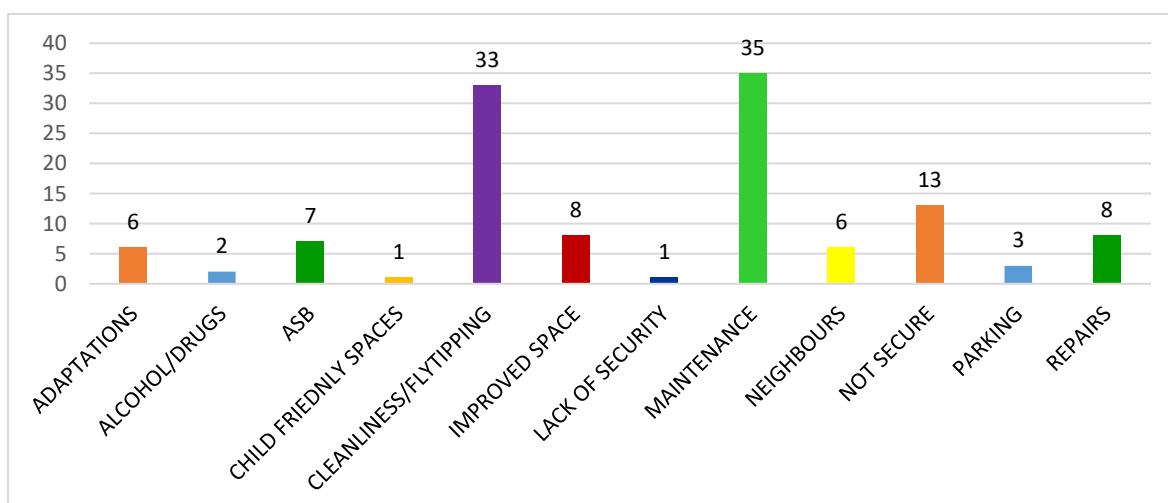


Figure 11

Figure 8 shows the main reasons whether or not respondents had any issues with communal spaces in their estate/neighbourhood. This was a comments-based question. Figure 11 is an overview of the negative comments by category. Of the 157 responses to

this question, there were 33 positive comments and 124 negative comments. The most common topic was 'Maintenance' with 35 comments (22.3%).

What are the top 5 improvements you'd like to see on your estate/neighbourhood?

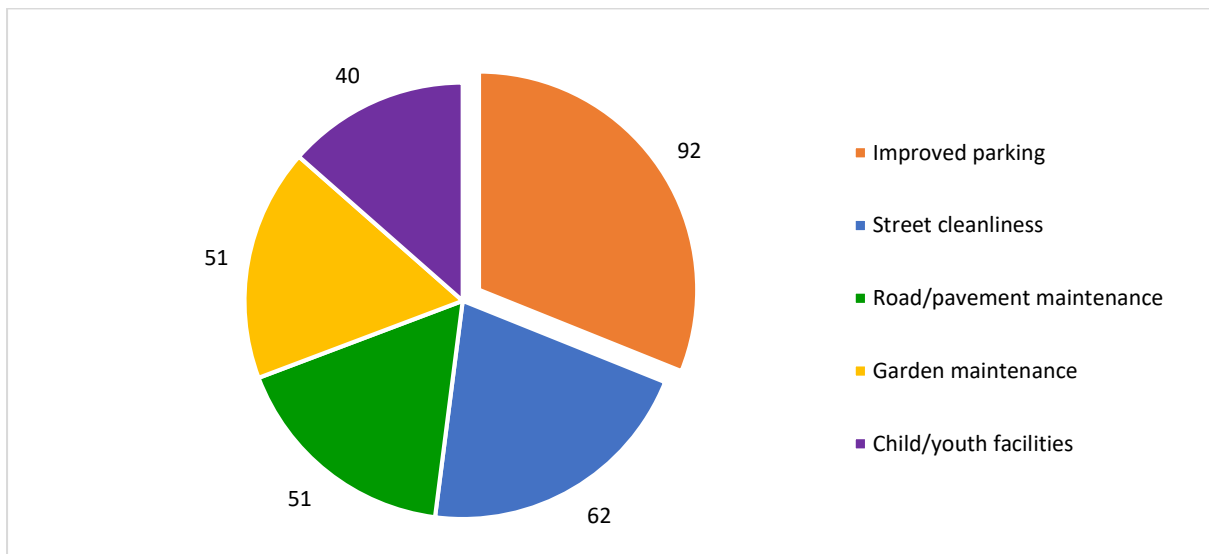


Figure 12

Figure 8 shows the top 5 improvements respondents would like to see in their estate/neighbourhood. This was a comments-based question. Figure 12 is an overview of the comments/improvements categorised based on respondents' feedback. Of the 253 responses to this question, the most common topic was 'Improved parking' with 92 comments (36.4%).